

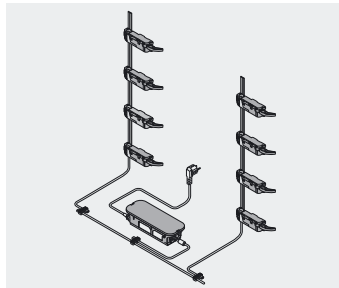
TANDEMBOX – ladesysteem

▶ SERVO-DRIVE voor TANDEMBOX

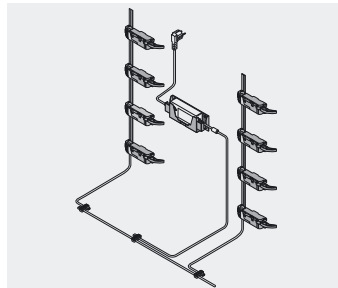
▶▶ Montage – bekabeling Blum-transfo 100 W



Standaardcorpus – bekabeling onderaan



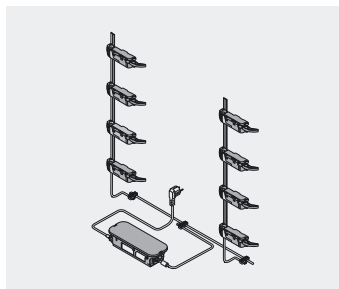
Bodemmontage



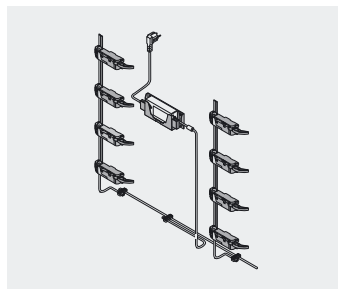
Wandmontage

Per verdeelkabel kan slechts 1 Blum-transfo aangesloten worden!

Standaardcorpus – bekabeling achteraan

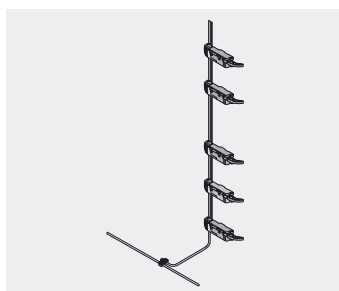


Bodemmontage

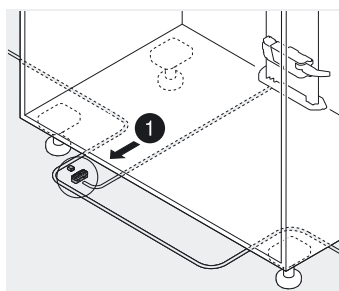


Wandmontage

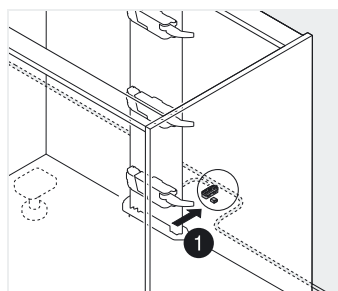
Vorraadkast



Bekabeling

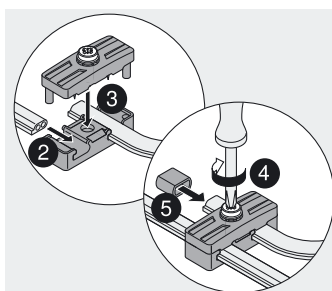


Bekabeling onderaan

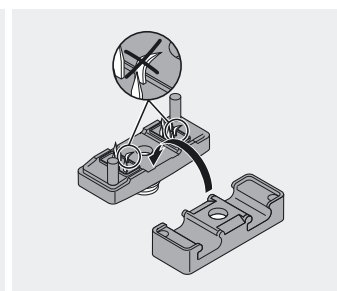


Bekabeling achteraan

Kabelkoppelstuk



Montage



Piercings niet beschadigen

TANDEMBOX

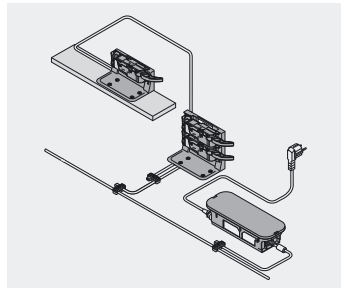
TANDEMBOX – ladesysteem

▶ SERVO-DRIVE voor TANDEMBOX

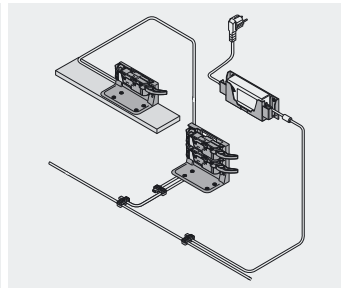
▶▶ Montage – bekabeling Blum-transfo 100 W



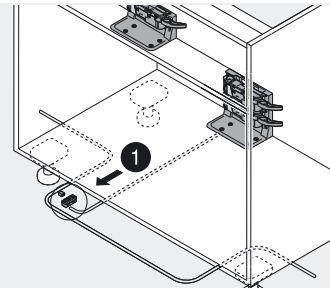
Spoelkast



Bodemmontage



Wandmontage

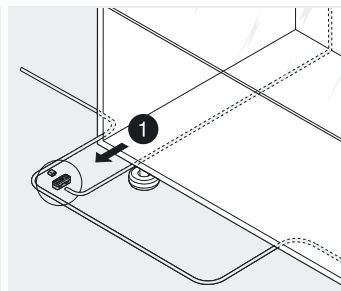
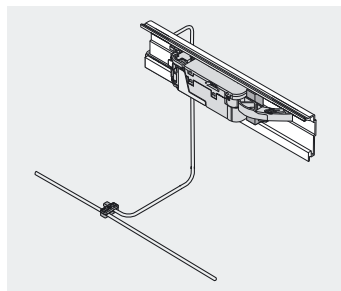


Bekabeling onderaan

Per verdeelkabel kan slechts 1 Blum-transfo aangesloten worden!

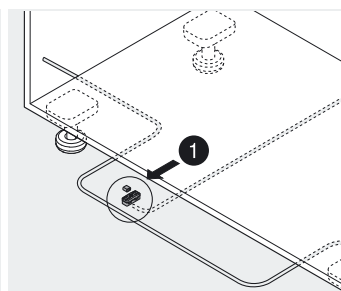
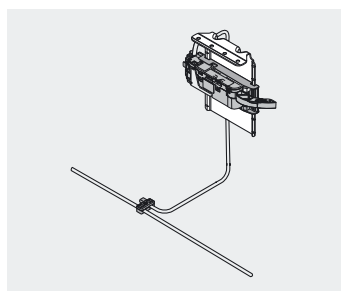
TANDEMBOX

Draagprofiel horizontaal



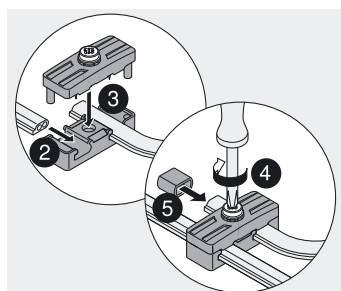
Bekabeling onderaan

Draaghoek boven

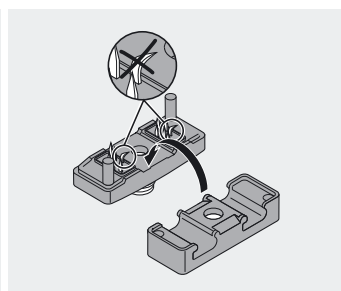


Bekabeling onderaan

Kabelkoppelstuk



Montage



Piercings niet beschadigen